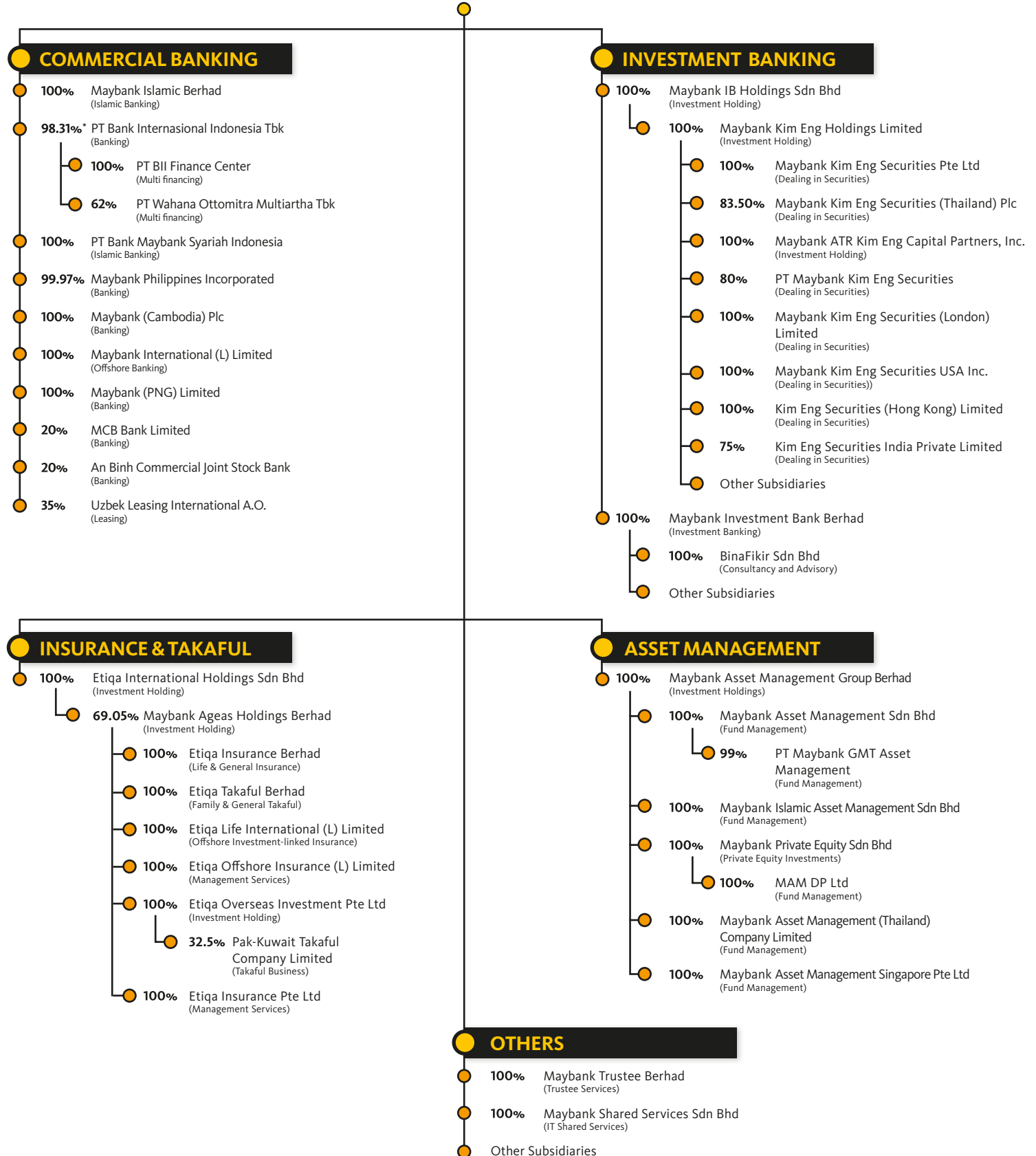


# Group Corporate Structure



## MALAYAN BANKING BERHAD



**Notes:**

1. Where investment holding companies are omitted, shareholdings are shown as effective interest.
2. Companies that are not shown include those dormant, under member's voluntary liquidation, have ceased operations or provide nominee services.
3. Refer to Note 62 : Details of Subsidiaries, Associates and Joint Ventures in the Financial Statements book of the Annual Report 2014 for the complete list of Maybank subsidiaries and associate companies.
- \* Effective interest. Refer to Note 62, footnote 16, page 241 of the Financial Statements book of the Annual Report 2014.